



# 930 WINTER STREET

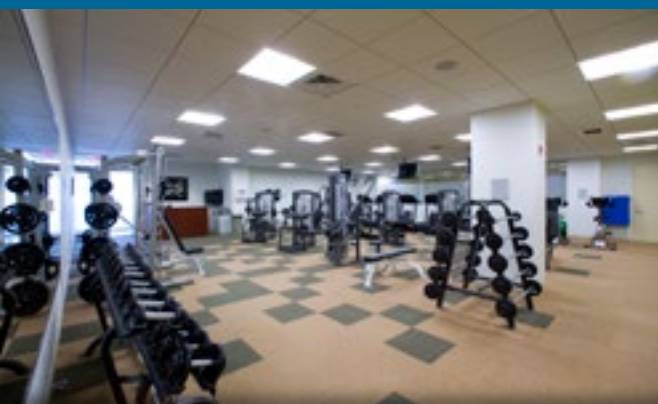
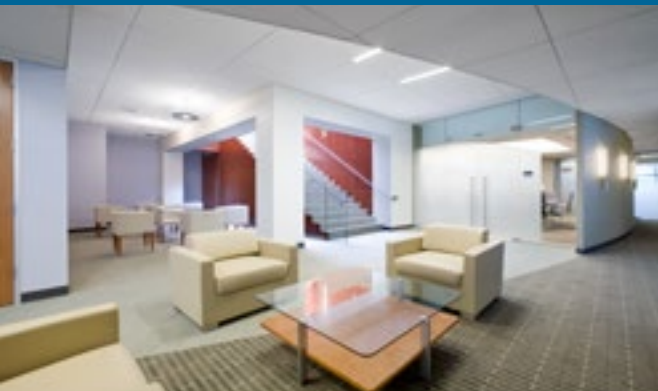
WALTHAM, MASSACHUSETTS



DAVIS MARCUS  
PARTNERS

**CBRE** | New England

CB Richard Ellis—N.E. Partners, LP, a CBRE Joint Venture



# 930 WINTER STREET

## WALTHAM, MASSACHUSETTS

---

### 450,000 SF OF PREMIER OFFICE SPACE ON 120 ACRES OF ROLLING WOODLANDS

- ◆ Developed in 2007
- ◆ 2012 BOMA Building of the Year
- ◆ Headquarters of Fresenius Medical Care and PerkinElmer
- ◆ ENERGY STAR certified
- ◆ Covered executive parking
- ◆ Full-service cafeteria, shared conference facility, fitness center and ATM

### CAMPUS AMENITIES & FEATURES

- ◆ Over 1.2 million SF campus
- ◆ 120 acre park-like setting
- ◆ Exceptional highway access, less than one mile from I-95/Route 128 and Route 2, and four miles to I-90 (Mass Pike)
- ◆ On-site property management
- ◆ HealthPoint Wellness Center
- ◆ Shuttle service to MBTA Red Line at Alewife Station in Cambridge
- ◆ Campus-wide wireless internet connectivity



HIGHWAY  
ACCESS



WELLNESS  
CENTER

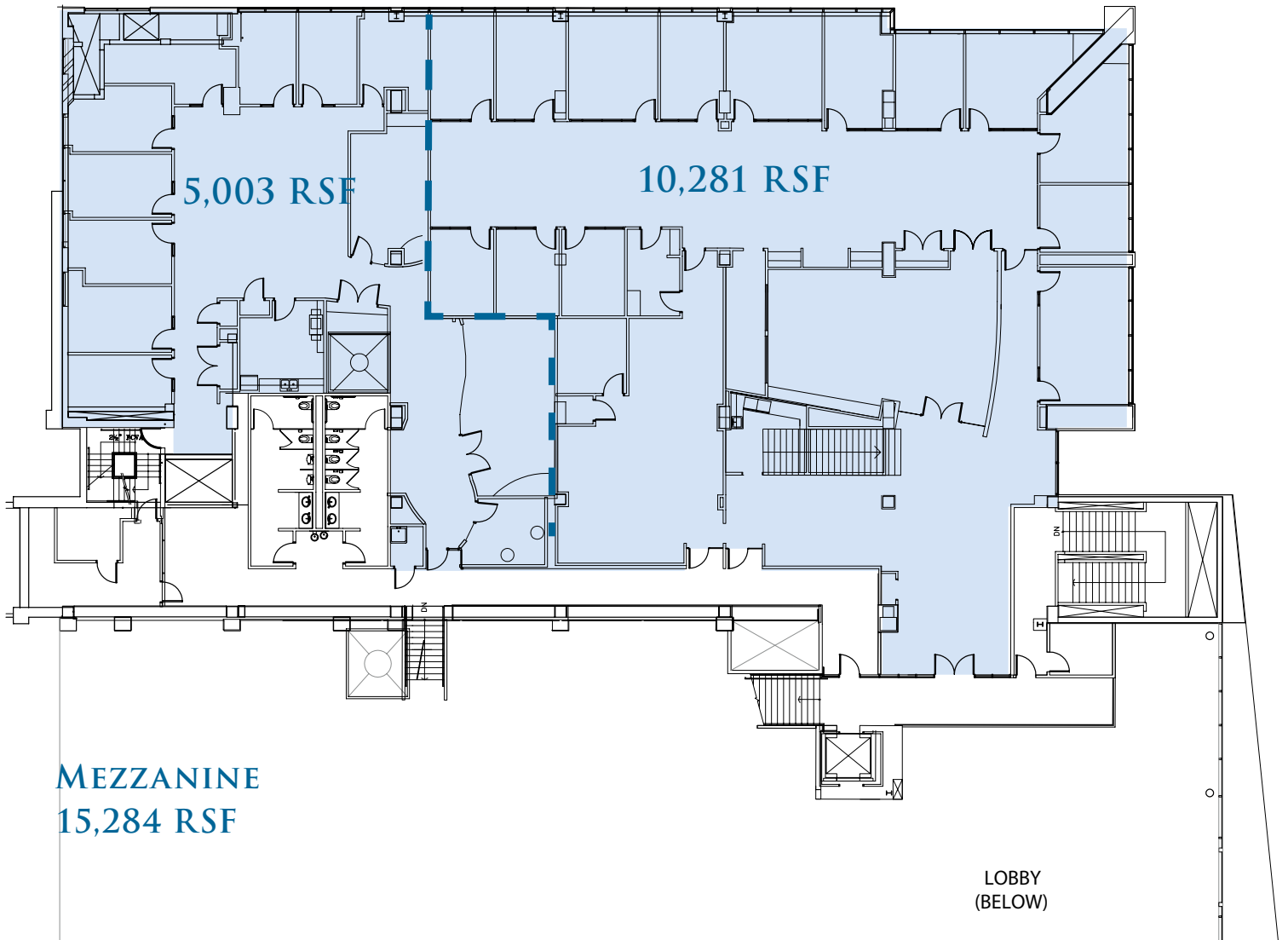


MBTA  
SHUTTLE



WIFI  
CONNECTIVITY

# FLOOR PLAN





**930 WINTER STREET**  
WALTHAM, MASSACHUSETTS

**ANDY MAJEWSKI**  
Executive Vice President/Partner  
617.912.7024  
andy.majewski@cbre-ne.com

**MATT SICILIANO**  
First Vice President  
617.912.7051  
matthew.siciliano@cbre-ne.com

**ROB KINLIN**  
First Vice President  
617.912.7091  
rob.kinlin@cbre-ne.com

EXCLUSIVE LEASING BY:

OWNED & DEVELOPED BY:

**CBRE** | New England

CB Richard Ellis – N.E. Partners, LP, a CBRE Joint Venture



**DAVIS MARCUS**

PARTNERS

A VENTURE BETWEEN MARCUS PARTNERS  
AND THE DAVIS COMPANIES

**CBRE/NEW ENGLAND**  
33 Arch Street, 28<sup>th</sup> Floor  
Boston, Massachusetts 02110

T: 617.912.7000  
F: 617.912.7001  
www.cbre-ne.com

© 2013 CBRE, Inc. This information has been obtained from sources believed reliable. We have not verified it and make no guarantee, warranty or representation about it. Any projections, opinions, assumptions or estimates used are for example only and do not represent the current or future performance of the property. You and your advisors should conduct a careful, independent investigation of the property to determine to your satisfaction the suitability of the property for your needs.