

# 850 WINTER STREET SITE PLAN

RESERVOIR  WOODS



DAVIS MARCUS  
PARTNERS

850 WINTER STREET

RESERVOIR  WOODS



  
DAVIS MARCUS  
PARTNERS

ELKUS | MANFREDI  
ARCHITECTS

# 850 WINTER STREET – LOBBY

RESERVOIR  WOODS



# 850 WINTER STREET – FLOOR PLAN

RESERVOIR  WOODS

## FIRST FLOOR



# 850 WINTER STREET – FLOOR PLAN

## SECOND FLOOR

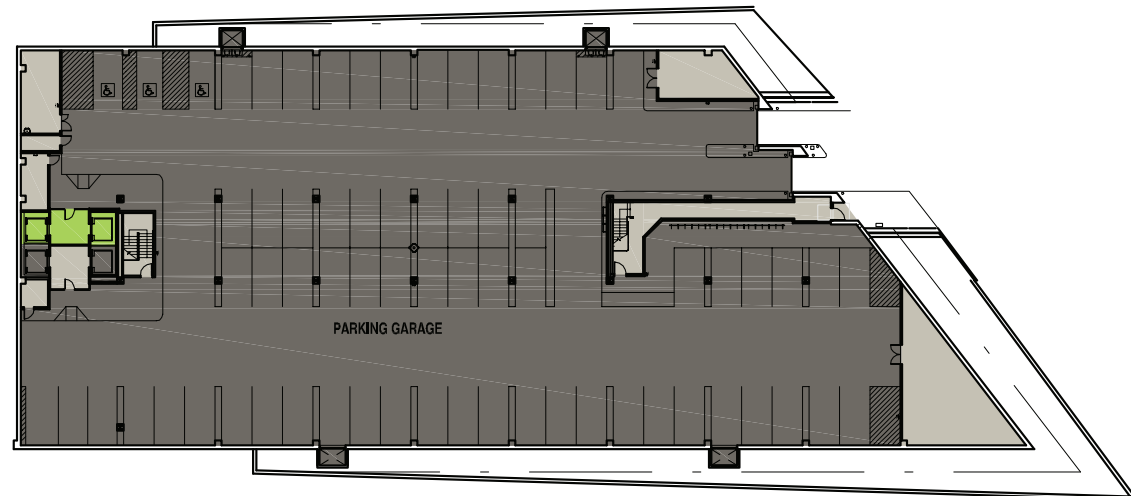


# 850 WINTER STREET – FLOOR PLAN

## THIRD FLOOR



## INDOOR EXECUTIVE PARKING



## 850 WINTER STREET

- ◆ 9' 6" finished ceiling
- ◆ 7' window height
- ◆ Dual lobby
- ◆ Flexibility of design
- ◆ Expanded column spacing
- ◆ LEED Gold core and shell
- ◆ Dedicated HVAC on each floor
- ◆ 3.5 per 1,000 RSF parking
- ◆ Full-service cafeteria
- ◆ Fitness room with showers & lockers
- ◆ Covered executive parking
- ◆ Shuttle to MBTA Red Line at Alewife
- ◆ On-site management
- ◆ Discounted membership to HealthPoint

## HEALTHPOINT AMENITIES

- ◆ Boston Sports Club operates a 76,000 SF, three-level first class health club
- ◆ Pro Sports Therapy
- ◆ Training facility for the Boston Celtics
- ◆ NE Baptist Hospital
- ◆ Daryl Christopher Salon
- ◆ Six-lane, 25-meter lap pool
- ◆ Three-story atrium
- ◆ Basketball courts
- ◆ Three multi-use studios
- ◆ Five international squash courts
- ◆ 8,000 SF children's multi-use gymnasium with nursery
- ◆ Main workout area with 240 pieces of exercise equipment
- ◆ 4,270 SF conference room and "Hall of Fame" room available for function rental

